

METROWEST FOOD PANTRY RESOURCES

“

Hunger happens when, after paying rent, for childcare or for medications, there isn't enough money left for groceries.

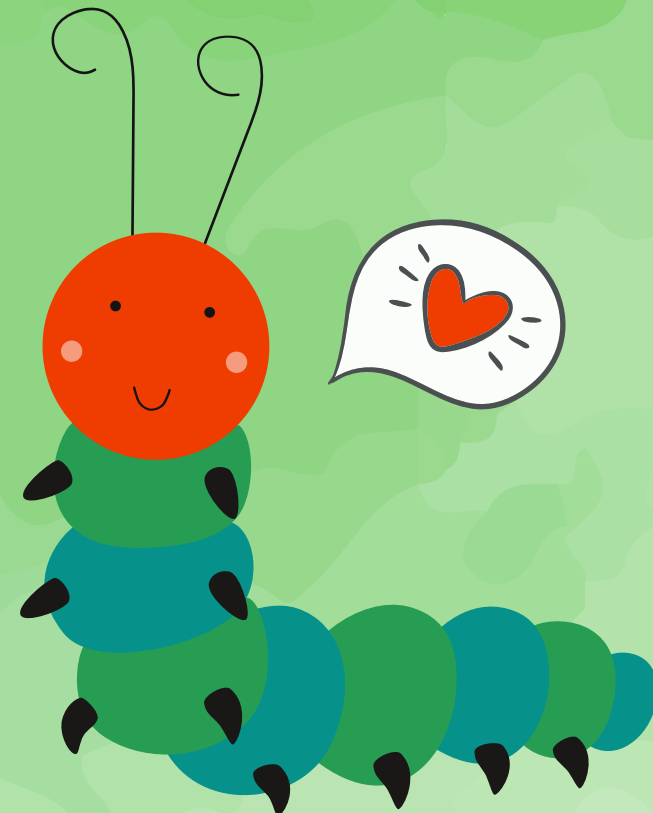
1.6 million residents of Massachusetts struggle with hunger; a disproportionate number of them are immigrants, people of color and families with children.

Prior to the pandemic, 1 in 12 residents faced food insecurity.

Today, the number of adults facing food insecurity is **1 in 6** and the number of children is **1 in 11**.

- "Food Insecurity in Massachusetts"
Radio Boston, WBUR, May 6, 2021.

”





COMMON GOOD MINI PANTRY

In June of 2021, the Alcott family of Natick installed a free mini-pantry on Common Street's front lawn on the corner of Common Street and School Street. Dubbed **The Common Good Mini Pantry**, it acts as a standing invitation for people in our Natick/Metrowest community to come together and take care of each other in an inclusive, fun, and accepting way. Anyone to take what they want, or donate supplies.

While the Mini-Pantry is self-serve, the Alcott family and a team of volunteers check it regularly to ensure that all products in the pantry are in good condition and unexpired, and that a mix of items are available.

CONTACT US

 @freepantry_natick

 www.commonstreet.org

 commonfoodpantry@gmail.com

ASHLAND

Ashland Food Pantry

162 W Union Street (lower level)
508.532.7949

FRAMINGHAM

Hope Framingham Food Food Pantry

214 Concord Street
508.848.2401
www.hopeworldwidema.org/framingham-food-pantry

Women's Infant Children Program (WIC)

7 Bishop Street
508.620.1445
www.smoc.org

NATICK

Natick Service Council

2 Webster Street
508.655.1791
www.natickservicecouncil.org

A Place to Turn

Hartford Street Presbyterian Church
99 Hartford Street
508.655.1791
www.aplacetoturn-natick.org/food-pantry/
www.aplacetoturn-natick.org/diaper-project/

SUDBURY

Sudbury Food Pantry

160 Concord Road
978.443.7728
www.sudburyfoodpantry.org

WAYLAND

Wayland Food Pantry

101 S Lackawanna Street
585.736.7586
www.enjoylwc.com/food-pantry/

WELLESLEY

Wellesley Food Pantry

207 Washington Street
781.235.1188
www.wellesleyfoodpantry.org/

FREQUENTLY NEEDED FOR THE MINI PANTRY

Canned Goods: soup, chicken, tuna, fruits, veggies, ready meals, spam.

Dry Goods: ramen noodles, pasta, granola bars, etc.

Lunchbox Items: applesauce, fruit cups, juice boxes, peanut butter, jelly.

Baby Supplies: diapers, formula, wipes.

Hygiene Products: shampoo, conditioner, soap, toilet paper, paper towels, toothpaste, toothbrushes, feminine hygiene products.

If the pantry is full, please leave your donation in the outer lobby area of Common Street Spiritual Center.